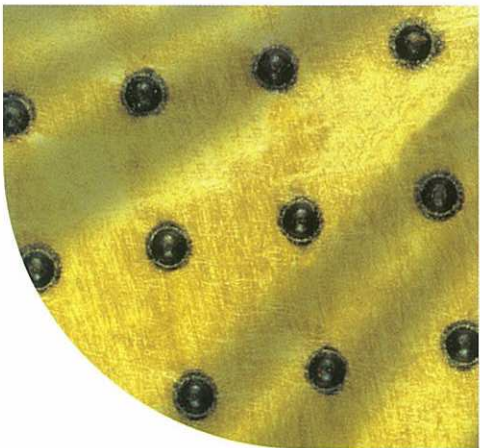
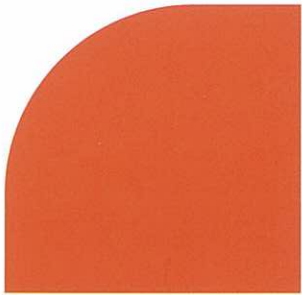
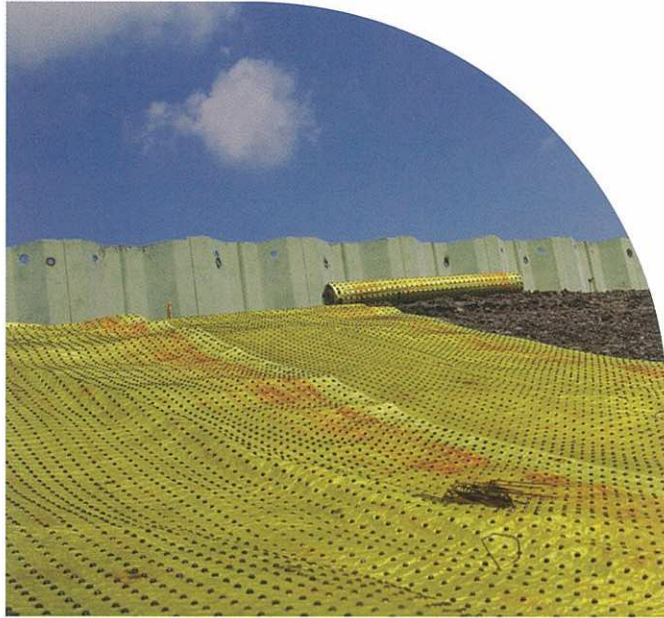


BIOBARRIER®



 **TYPAR**
Geosynthetics you can trust

BIOBARRIER

Surround System



Tree roots seek out air and moisture in the soil, causing expensive damage to underground infrastructure. BIOBARRIER'S unique geotextile design lends flexibility to surround infrastructure, extending the life of your investment

Removal and disposal of below-ground infrastructure is messy, time-consuming, and costly. In areas with aggressively rooting species, root treatment or complete replacement is required every one to five years. BIOBARRIER is guaranteed to prevent roots from crossing its protective membrane, eliminating long-term costs from clogging or fracturing caused by roots. With a permeable, non-toxic design, BIOBARRIER protects investments without impeding infiltration or drainage which maintains optimal system performance over time.

BIOBARRIER Surround System is used for

- Septic tanks and leach fields
- Perforated drain tile
- Stormwater drainage pipes
- Underground storage tanks
- City sewer and municipal water pipes

Product Selector

Root Control Width	12"	19.5"	24"	29"	39"	58.5"
Building Foundations					●	●
Burial Vaults/Tombstones						●
Containers			●	●	●	●
Curbs		●	●			
Drain Lines	●	●	●	●	●	●
Earthdams						●
Golf Greens/Tees/ Cart paths		●	●	●	●	
Landfills						●
Medians			●	●	●	
Paths	●	●	●	●		
Planting Beds		●	●	●	●	●
Pots	●	●				
Retaining Walls				●	●	●
Roads		●	●	●		
Roof Gardens					●	●
Septic Tanks/Fields						●
Sidewalks		●	●	●		

Root Control Width (continued)	12"	19.5"	24"	29"	39"	58.5"
Swimming Pools		●	●	●	●	
Tennis Courts		●	●	●	●	
Underground Pipes/ Cables	●	●	●	●	●	●
Underground Stor- age Tanks						●
Utility Substations		●	●	●	●	

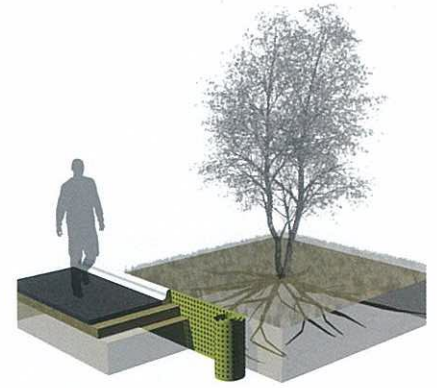
BIOBARRIER Root Control is available in 20 foot or 100 foot roll lengths

Weed Control width	29"	39"	58.5"
Fence Rows	●	●	●
Guardrails	●	●	●
Landscaping	●	●	●
Pavers	●	●	●
Street Medians	●	●	●
Tombstones	●	●	
Tree Skirts			●
Utility Substations			●

BIOBARRIER Weed Control is available in 20 foot or 100 foot lengths

BIOBARRIER

Root Control System



Trees and shrubs add value and beauty to property, except when their roots grow into hardscapes, such as sidewalks, buildings and roadways, or into landscaped areas, which are well watered. Then the damage can cost you plenty.

Used vertically, the BIOBARRIER Root Control System protects adjacent structures from root damage. Guaranteed protection for 15 years reduces the chance of injury and potential liability, as well as the costs associated with preventative maintenance and damage repair.

BIOBARRIER works invisibly to deflect roots. Its nodules slowly release Trifluralin, preventing root tip cell division, which is the method by which roots grow. A small amount of Trifluralin is constantly released and as it biodegrades, is continuously replaced, ensuring the effectiveness and long life of the herbicide zone.

While physical barriers alone can create root girdling, BIOBARRIER stops continued root growth allowing for healthier trees. Placed beside the object to be protected, BIOBARRIER creates a zone of protection on all sides of the nodules. Roots growing into the zone are redirected while roots outside the zone continue to grow normally; tree health is not impacted since Trifluralin is not systemic.

Since the system includes a standard drainage fabric, BIOBARRIER allows water, air and nutrients to pass through, not adversely affecting soil hydrology.

Along Hardscapes

BIOBARRIER is most frequently used along hardscapes such as sidewalks, retaining walls, parking lots, buildings, swimming pools, foundations and other structures to prevent damage from roots. Preventing that damage for 15 years reduces the chances of injury and potential liability, as well as the costs associated with preventive maintenance and damage repair.

Under Pots

Used inside the larger pot, BIOBARRIER Pot-N-Pot prevents roots from growing through drain holes and attaching to native soil. Because the roots are contained within the pot, less labor is required for harvesting and less damage to roots is caused as trees are removed.

In Dams/Levees

Tree roots can grow into the mechanisms of dams and levees, causing potential havoc and the failure of equipment that can result in flooding. BIOBARRIER ensures the integrity of the dam or levee from roots; at the same time, it allows trees and shrubs to beautify the area.

